

Getting started with Whispli

Informant's Journey Guide

Tutorials on how to submit and follow up on a Report through Whispli

Whispli Informant Guide

Welcome to Whispli!

Whispli is a trusted and independent tool enabling you to create your safe space to speak up to your organization.

Using Whispli, you can decide to remain truly anonymous towards your organization, or you can decide to share your identity at any time. It is up to you.

We know you may still have questions, so please [reach out](#) to us if anything is not clear.

 Before you start, you might be wondering

[What can I report through the Whispli platform?](#)

[Ready to start exploring Whispli?](#) This Informant Guide will help you learn all you need to know to submit your report and follow up or send evidence at any time.

[Need more help?](#) Check out our [? Helpcenter](#) with our FAQ.

Content

How to submit a report

With a safe inbox | With guest access | Create multiple reports from your safe inbox

Follow up on your report

Chat with a Case Manager | Share additional files

Whispli Mobile App

Submit a report with the app | Follow up on your report with the app

Be notified about your report

Via the mobile app | Via email

How to submit a report

How to submit a report

[With a safe inbox](#)

With guest access

Create multiple reports from your safe inbox

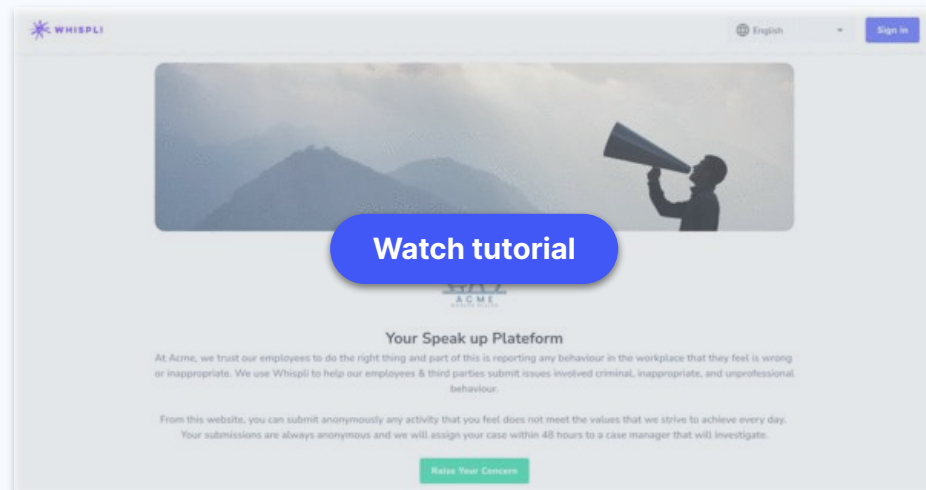
Follow up on your report

How to use the Mobile App

Receive Notifications

With a safe inbox

Learn how to use the Whispli platform to submit a report via a safe inbox.



? FAQs

[Why do I need a Whispli Inbox?](#)

[Will my Organization see my username or email?](#)

How to submit a report

How to submit a report

With a safe inbox

[With guest access](#)

Create multiple reports from your safe inbox

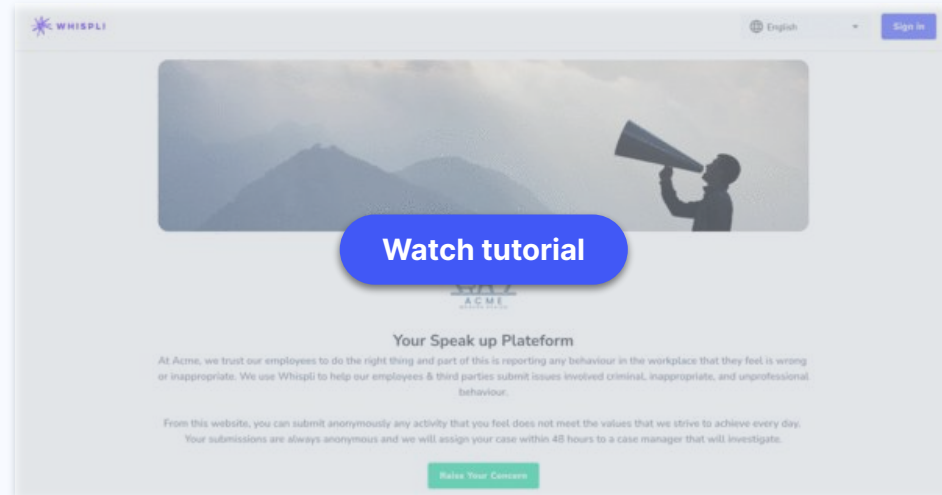
Follow up on your report

How to use the Mobile App

Receive Notifications

With guest access

Learn how to use the Whispli platform to submit a report without an inbox, directly through our guest access.



? FAQs

[Send Reports and Start a Conversation without a Whispli Inbox](#)

How to submit a report

How to submit a report

With a safe inbox

With guest access

[Create multiple reports from your safe inbox](#)

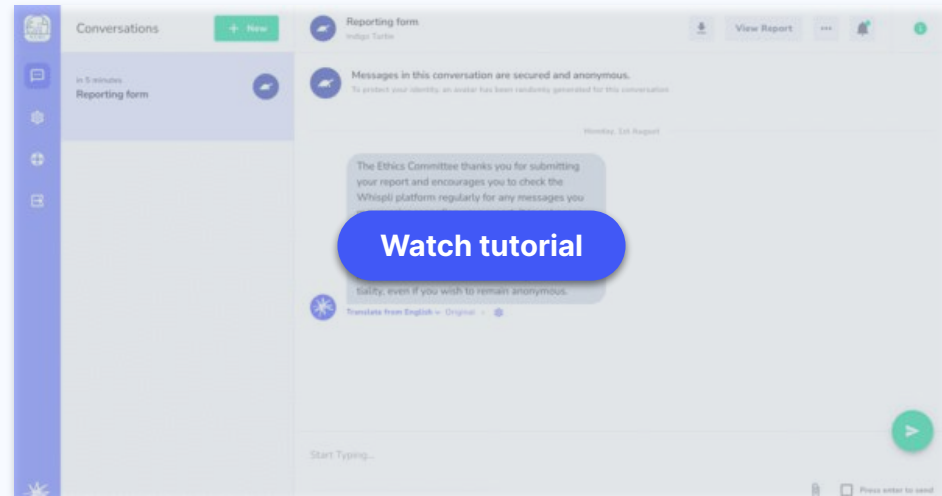
Follow up on your report

How to use the Mobile App

Receive Notifications

Create multiple reports from your safe inbox

Learn how to use the Whispli platform to submit multiple reports from your Whispli safe inbox, should you experience or be the witness of multiple misconducts.



? FAQs

[Can I decide to disclose my identity later?](#)

Follow up on your report

How to submit a report

Follow up on your report

[Chat with your Case Manager](#)

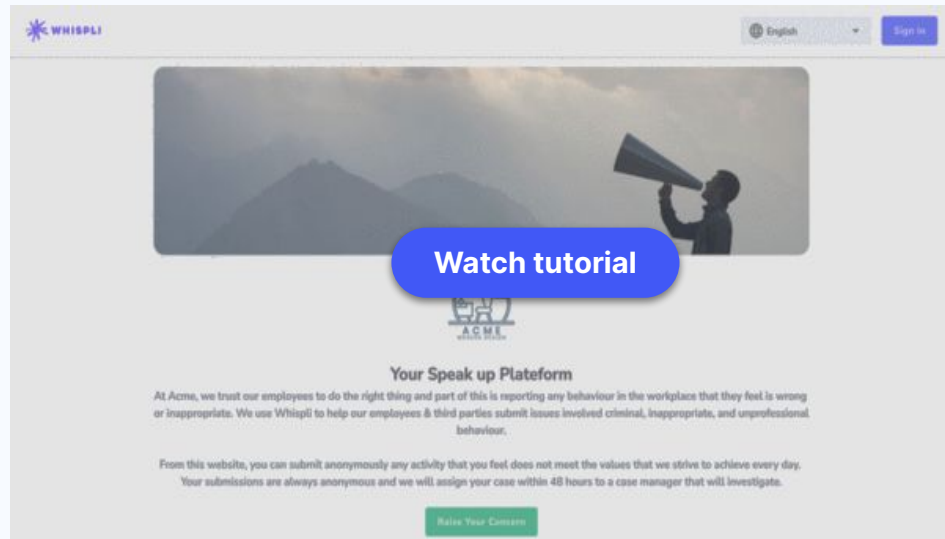
Share additional files

How to use the Mobile App

Receive Notifications

Chat with your Case Manager

Learn how to continue the conversation and chat with the person in charge of your report



? FAQs

[Can I discuss with someone from my Organization and remain anonymous?](#)

Follow up on your report

How to submit a report

Follow up on your report

Chat with your Case Manager

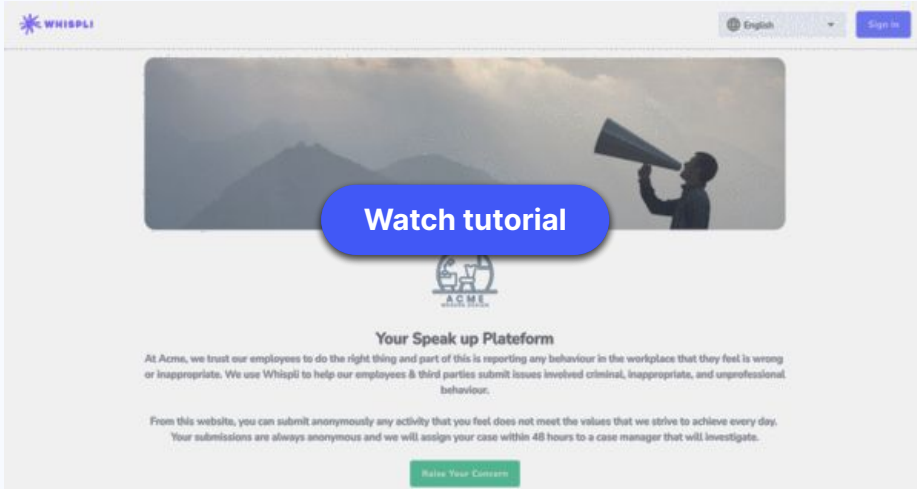
[Share additional files](#)

How to use the Mobile App

Receive Notifications

Share additional files

Learn how to upload and share additional documents to support your report through your safe inbox or via your guest access.



The screenshot shows the Whispli website interface. At the top left is the Whispli logo, and at the top right are language and sign-in options. The main content area features a large image of a person shouting into a megaphone against a mountain background. A prominent blue button labeled 'Watch tutorial' is overlaid on the image. Below the image is the ACME logo and the heading 'Your Speak up Platform'. The text below explains that at ACME, employees are trusted to do the right thing, and Whispli helps report workplace issues. A green button at the bottom is labeled 'Raise Your Concerns'.

? FAQs

[Is metadata removed from the files I attach to my Report?](#)

Whispli Mobile App

How to submit a report

Follow up on your report

Whispli Mobile App

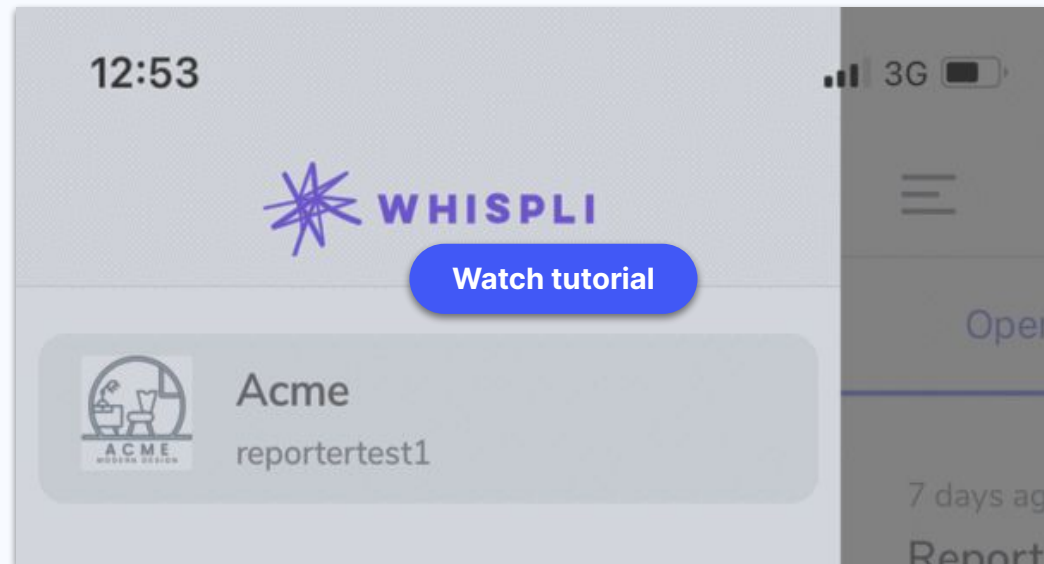
[Submit a report with the app](#)

Follow up on your report with the app

Receive Notifications

[Submit a report with the app](#)

Learn how to download and submit a report directly through the Whispli mobile app.



Whispli Mobile App

How to submit a report

Follow up on your report

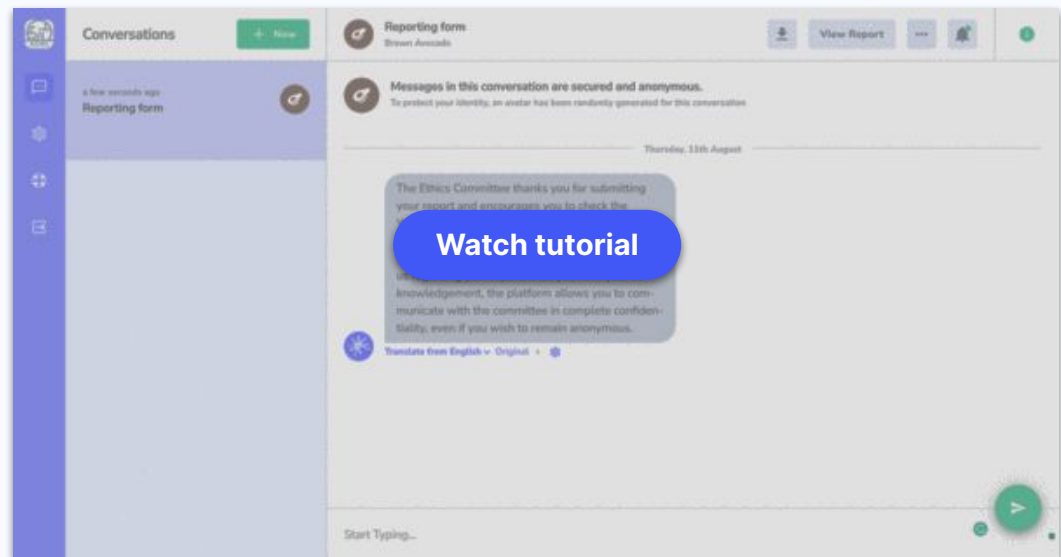
Whispli Mobile App

Submit a report with the app
[Follow up on your report with the app](#)

Receive Notifications

Follow up on your report with the app

Learn how to follow up on your report with the Whispli Mobile app. With Face ID or a personal code, you can easily and securely log back in in just a few seconds. Whispli app allows you to chat anonymously and send more files.



Receive Notifications

Via the mobile app

Learn how to receive a push notifications on your phone when a case manager from your organization tries to get in touch with you or when an update is given on your report.

How to submit a report

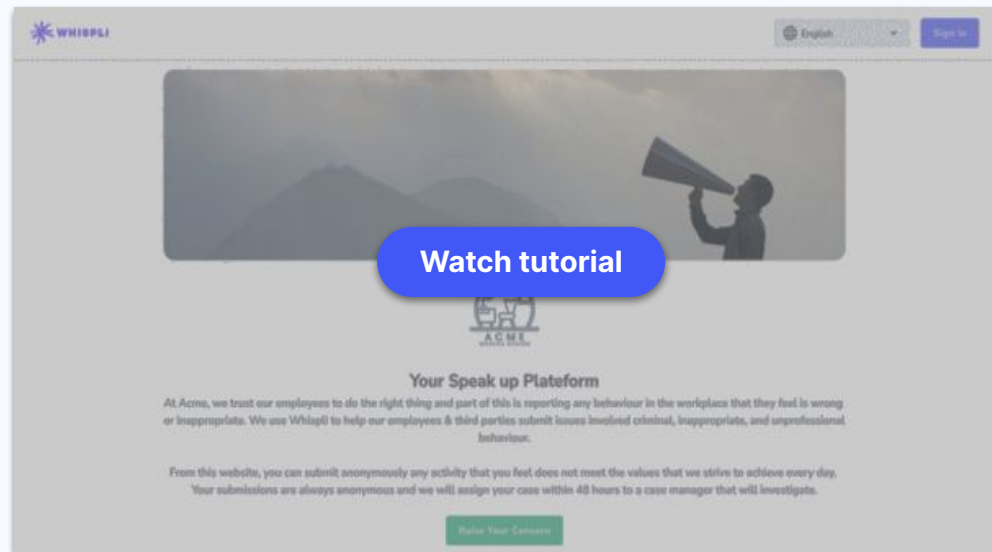
Follow up on your report

Whispli Mobile App

Receive Notifications

[Via the mobile app](#)

[Via email](#)



Receive Notifications

How to submit a report

Follow up on your report

Whispli Mobile App

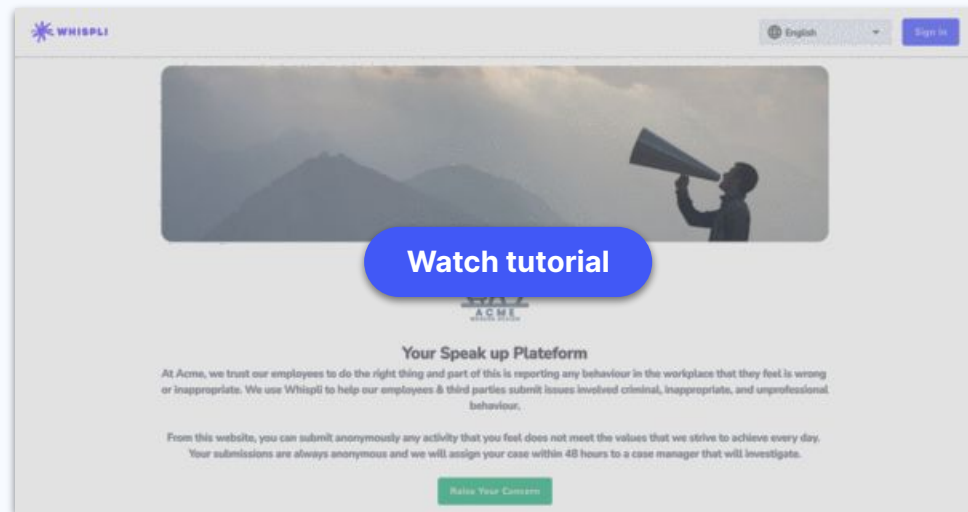
Receive Notifications

Via the mobile app

[Via email](#)

Via email

Learn how to receive an email when a case manager from your organization tries to get in touch with you or when an update is given on your report.



? FAQs

[Will my Organization see my username or email ?](#)

